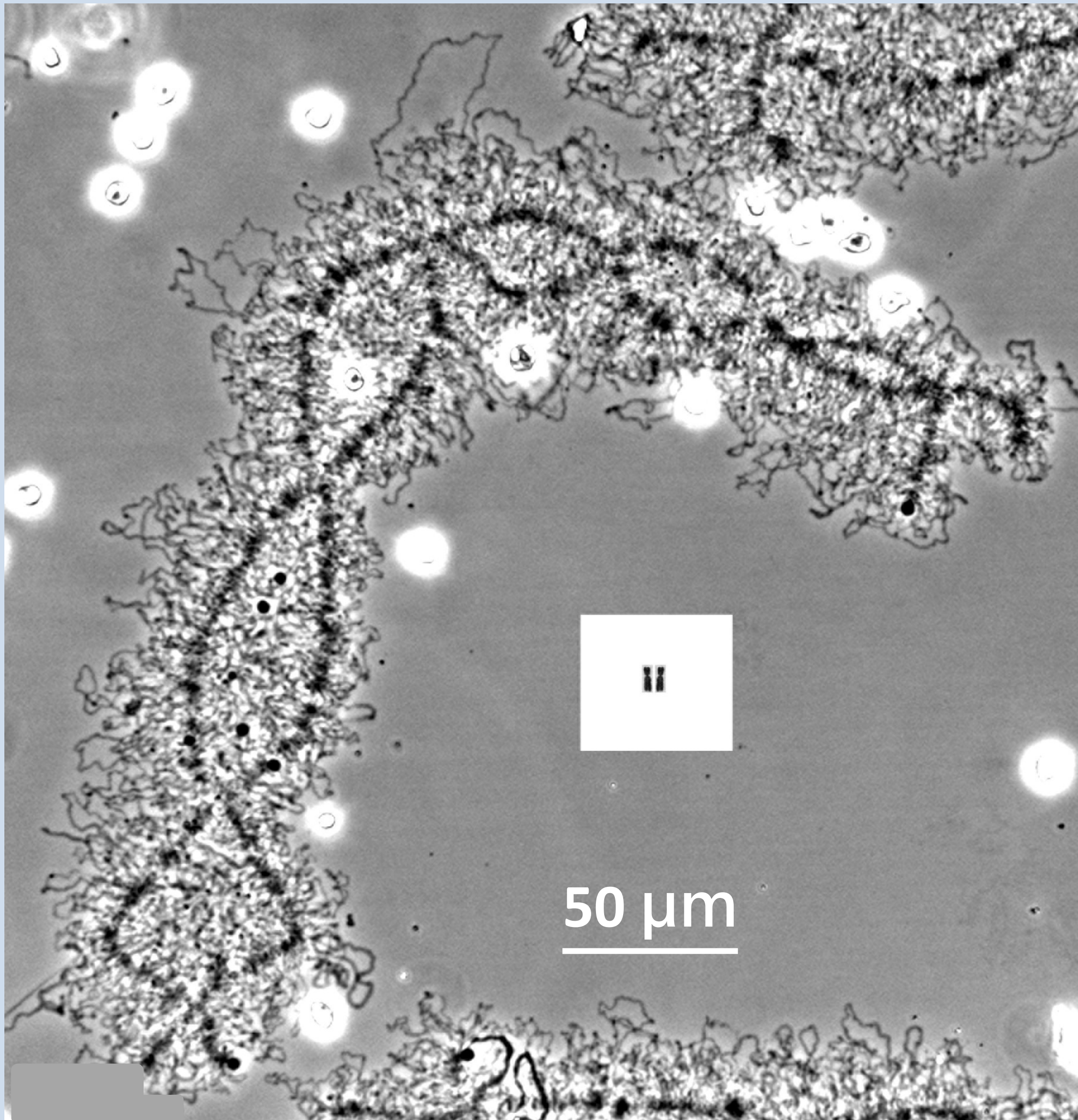


LOOK !

How big is a lampbrush chromosome?



This photograph shows a medium sized lampbrush bivalent freshly isolated from an axolotl (*Ambystoma mexicanum*) oocyte and viewed in its life-like form with phase contrast microscopy. As a comparison, the inset shows **AT THE SAME MAGNIFICATION** a pair of medium sized mitotic metaphase chromosomes from an axolotl larva. That the relatively minute volume of chromatin represented by the metaphase chromosome should be so transformed and rearranged as to constitute the DNA axis of a lampbrush chromosome that is nearly a millimetre long and all its lateral loops signifies that something very special must be happening on these amazing chromosomes.

Answer : 0.825 millimetres